

Contents

General Maintenance	P.1
Decimal Point Selector Switch	P.1
Rounding Switch	P.2
Calculation / Grand Total / Rate Set Switch	P.2
Power / Print / Item Count Switch	P.2
Key Index	P.3
Important Functions to Remember	P.3
Tax Calculation Function	P.4
Business Sales Calculation	P.4
Replacing the Ink Roller	P.5
Inserting Printing Paper	P.6
Calculation Example	P.33-38

General Maintenance

- Do not use or leave the calculator under direct sunlight. Areas subject to rapid temperature changes, high humidity, dust and dirt should also be avoided.
- Use a dry cloth to clean the casing of the unit. Do not use water or detergents.
- Only use the printer when the paper roll is loaded.
- Avoid using the calculator in places where there are iron filings, as this may affect the electrical circuits of the calculator.
- Do not place anything on top of the machine, particularly on top of the printer mechanism.
- Turn the calculator off before removing the plug from the electrical outlet.
- In case of electrical fault (i.e. smoke), disconnect the plug from the electrical point immediately. The socket outlet should be near to the equipment and easily accessible.

Decimal Point Selector Switch

DECIMAL : Used for designating the decimal point position (0 2 3 4) for calculated results.

DECIMAL + (Add-Mode) : Addition and subtraction functions are performed with an automatic 2-digit decimal. It is convenient for currency calculations.

DECIMAL F (Floating Decimal Point) : All effective numbers up to 12 digits are printed or displayed.

1

Tax Calculation Function

TAX + **Add Tax Key** – Used for adding the tax amount to the displayed figure.

TAX - **Deduct Tax Key** – Used for deducting the tax amount from the displayed figure.

- Note:** The entered tax rate will remain stored even when the calculator is turned off. However, the entered rate will be deleted. When the plug is disconnected, in this case please enter the rate again.

Business Sales Calculation Function

COST **SELL** **MARGIN** – Used for calculating the cost, selling price and profit margin amount. Enter the value of any 2 items to obtain the balance value item. (e.g. enter the value of the cost and the selling price to obtain the profit margin %.)

Overflow

In the following cases, "E" is displayed, a dotted line is printed, the keyboard is electronically locked, and further operation is impossible. Press **CE** to clear the overflow. The overflow function occurs when:

- The result or the memory content exceeds 12 digits to the left of the decimal point.
- Dividing by "0".
- The sequential operation speed is faster than the calculation processing speed. (Buffer Register Overflow)

- Electromagnetic interference or electrostatic discharge may cause either the display or the printer to malfunction, a printer error lock, or the contents of the memory to be lost or altered. Should this occur, press the **CE** key or turn the power slide switch off and then turn it on again to restart the calculation from the beginning.

4

Rounding Switch

ROUNDING : Used for round-up [\uparrow], round-off [5/4], or round-down [\downarrow] to the pre-selected decimal digits in the result.

Calculation / Grand Total / Rate Set Switch

CALCULATION : Set switch to "CAL" position to perform the calculations.

GRAND TOTAL : When calculations are performed with the switch set to "GT", the totals are accumulated in the grand total memory. Each time **GT** is pressed, the subtotal number is printed with the symbol G+. Press **GT** key to obtain the grand total followed by the symbol G \diamond . Press **GT** successively to clear the grand total.

RATE SET : Set switch to "RATE SET" for setting or recalling the TAX rate.

Power / Print / Item Count Switch

POWER OFF : Turns power off.

POWER ON / PRINT OFF : Turns power on. Entries and results will appear on the display, but will not be printed out.

POWER ON / PRINT ON : Entries and results will appear on the display and will be printed out.

ITEM : Set switch to "ITEM" to count the number of times the **+** and **=** keys have been pressed. The item count will be printed on the left hand side of the paper roll (up to 999 times) when the **GT**, **CE** or **MC** keys are pressed.

2

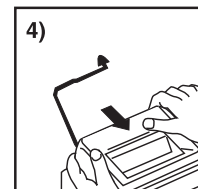
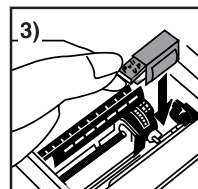
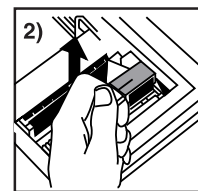
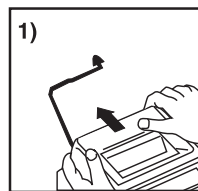
Specifications

Power source: AC230V ($\pm 15\%$) 50Hz, AC240V ($\pm 10\%$) 50Hz
 Operation Temperature: 0°C to 40°C (32°F to 104°F)
 Calculating Capacity: 12 digits maximum
 Dimension: 292mm (W) x 210mm (L) x 65mm (H) /
 11-1/2" (W) x 8-17/64" (L) x 2-9/16" (H)
 Weight: 1.03 kg (2.27 lb)
 (Subject to change without notice)

Replacing The Ink Roller

Note: Turn power switch off.

- Remove the printer cover by pushing down on the \blacktriangle mark. (Figure 1)
- Hold the left side of the ink roller indicated as "pull up" and lift the old ink roller up to remove it. (Figure 2)
 - To maintain clear printing, change the ink roller after about 8 rolls of printing paper have been used.
- Insert a new ink roller into position. (Figure 3)
- Replace the printer cover. (Figure 4)
 - Use only the Ink Roller CP-13
 - Do not attempt to refill the ink roller, since this may cause mechanical difficulties.



5

Key Index

- ↑** **Paper Feed Key:** Used for advancing the paper.
- **Right Shift Key:** Used for shifting and correcting an entered numeral. A single press deletes the last digit on the right.
- % \pm** **Percent Plus-Minus Key:** Used for performing percentage, add-on and discount calculations.
- M \pm** **Memory Plus Equal Key:** Used for obtaining a calculation result and adding the result automatically to the memory. This key is also used for adding number to the memory.
- M \ominus** **Memory Minus Equal Key:** Used for obtaining a calculation result and subtracting the result automatically from the memory. This key is also used for subtracting a number from the memory.
- M \diamond** **Memory Subtotal Key:** Used for obtaining intermediate result of the memory calculation. This key will not clear memory contents.
- M \times** **Memory Total and Memory Clear Key:** Used for obtaining total of memory contents. This key will clear memory contents at the same time.

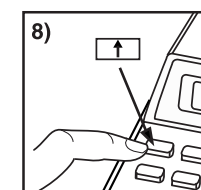
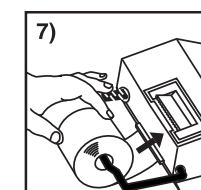
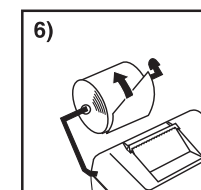
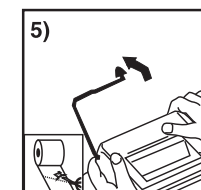
Important Functions to Remember

- CE** **Clear Entry and Clear Key:** Press once to clear last entered value. Press again to clear all entered values except memory. This key is also used for clearing the overflow error.
- =** **Equal Key:** Used for obtaining multiplication and division results.
- ≠** **Non-Add / Subtotal Key:** Used for printing out information which does not affect the calculation such as dates and serial numbers. Figure are printed on the left-hand side of the paper. It is also used for obtaining intermediate results.
- ⊗** **Total Key:** Used for obtaining addition and subtraction results.

3

Inserting Printing Paper

- Lift up the paper arm (Figure 5).
 - When inserting the paper, cut the edge of the paper as shown.
- Place the new paper roll on the arm. The edge of the paper should be positioned as shown (Figure 6).
 - Suitable paper roll – Width: 57mm (2-1/4") / Diameter: max. 86mm (3-3/8")
- Insert the paper into the slit located at the back of the machine as indicated (Figure 7).
- Turn the power switch on. Press the paper feed key **↑** to advance the paper (Figure 8).



6